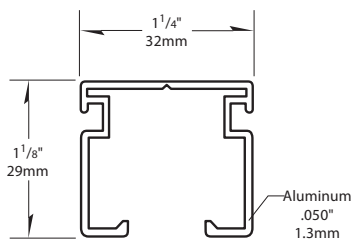
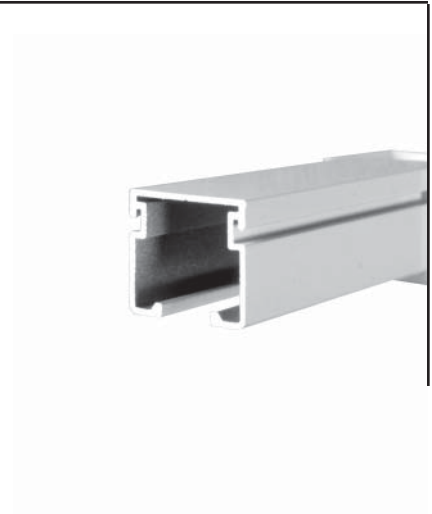


Ultra Cube®

Cubicle Track



- Heavy duty extruded aluminum track with durable clear anodized aluminum or white baked acrylic enamel finish
- Versatile track can be used with IV Bag Holders and Safety Loading Unit
- Exclusive Gridclips allow fastening of the track to suspended ceilings without the use of screws or backing
- Color-matched splices, end caps and bends available for quick on-site installation
- Manufactured in 7' (2.1m), 8' (2.44m), 9' (2.74m), 12' (3.66m) or 16' (4.88m) lengths to accommodate any application

IPC.500/REV.14

Inprocorp.com • 800.222.5556 • 262.679.9010
World Headquarters S80 W18766 Apollo Drive, Muskego, WI 53150 USA

CLICKEZE® •
PRIVACY SYSTEMS
A DIVISION OF INPRO®

Ultra Cube® Cubicle Track

Suggested Specifications

PART 1 - GENERAL

1.01 SUMMARY

A. Cubicle Tracking Systems

1.02 SECTION INCLUDES

A. Ultra Cube Cubicle Tracking System

- Overhead metal curtain track and guides
- Track accessories and attachments

1.03 SUBMITTALS

- Product Data: Manufacturer's printed product data for each type of cubicle tracking system specified.
- Detail Drawings: Mounting details with the appropriate fasteners for specific project substrates.
- Samples: Verification samples of cubicle track, 4" (102mm) long, in full size, with carriers and end cap.
- Manufacturer's Installation Instruction: Printed installation instructions for each cubicle tracking system.

1.04 DELIVERY, STORAGE AND HANDLING

- Deliver materials in unopened factory packaging to the jobsite.
- Inspect materials at delivery to assure that specified products have been received.
- Store in original packaging in a climate controlled location away from direct sunlight.

1.05 PROJECT CONDITIONS

- Environmental Requirements: Products must be installed in an interior climate controlled environment.

1.06 WARRANTY

- Standard Clickeze® Limited Lifetime Warranty against material and manufacturing defects.

PART 2 - PRODUCTS

2.01 MANUFACTURER

A. Acceptable Manufacturer:

Clickeze® Privacy Systems, Inpro Corporation,
PO Box 406 Muskego, WI 53150 USA;
Telephone: 800.222.5556, Fax: 888.715.8407,
www.inprocorp.com

B. Substitutions: Not permitted

- Provide all cubicle tracking systems from a single source.

2.02 TRACK MATERIAL

A. Cubicle Tracking System

- Ultra Cube, heavy duty extruded aluminum cubicle track with clear anodized aluminum or white baked acrylic enamel finish. Aluminum shall be 6063-T5. Dimensions: height 1 1/8" (29mm), width 1 1/4" (32mm).
 - White baked acrylic enamel finish
 - CE800007 - 7 foot length (2.1m)
 - CE800008 - 8 foot length (2.44m)
 - CE800009 - 9 foot length (2.74m)
 - CE800012 - 12 foot length (3.66m)
 - CE800016 - 16 foot length (4.88m)
 - Clear anodized finish
 - CE800007-AN - 7 foot length (2.1m)
 - CE800008-AN - 8 foot length (2.44m)
 - CE800009-AN - 9 foot length (2.74m)
 - CE800012-AN - 12 foot length (3.66m)
 - CE800016-AN - 16 foot length (4.88m)
- Bent sections: Provide factory bent track sections with one-foot radii to mate with straight track sections:
 - White baked acrylic finish
 - CE8061 - 1' x 1', 60° bend
 - CE8042 - 2' x 2', 45° bend
 - CE8092 - 2' x 2', 90° bend
 - CE8093 - 3' x 3', 90° bend
 - CE8094 - 4' x 4', 90° bend
 - CE8094 - 54" radius, 7' arch length
 - Clear anodized finish
 - CE8061-AN - 1' x 1', 60° bend
 - CE8042-AN - 2' x 2', 45° bend
 - CE8092-AN - 2' x 2', 90° bend
 - CE8093-AN - 3' x 3', 90° bend
 - CE8094-AN - 4' x 4', 90° bend
 - CE8094-AN - 54" radius, 7' arch length

2.03 TRACK COMPONENTS

- Track Attachment: Provide appropriate attachment accessories as required for ceiling grid members.

- Flush Gridclip: Flush panel T-bar gridclip;

- CE9270 - Standard
- CE9272 - Swivel
- CE9274 - Suspended Support Set
- CE9274-AN - Suspended Support Set, Anodized
- Regular Gridclip: Tegular edge gridclip;
 - CE9271 - Standard
 - CE9273 - Swivel
 - CE9275 - Suspended Support Set
 - CE9275-AN - Suspended Support Set, Anodized
- Track Splice: Provide extruded aluminum splice to join track sections.
 - CE8051 - Track Splice
 - CE8051-AN - Track Splice Anodized
- End Caps: Provide molded thermoplastic end caps for end of track section.
 - CE9080 End Cap, white
 - CE9100 End Cap with hook, white
 - CE9080-AN End Cap, gray
 - CE9100-AN End Cap with hook, gray
- Wands: Provide wand to move curtain along the track.
 - CE9224: Adjustable Chain Wand 24" (609mm)
 - CE100702: Drapery Wand 33"
 - CE100679: Drapery Wand 36"
 - CE100698: Drapery Wand 48"
- Safety Loading Unit: Provide loading unit to splice fit with standard 5ft. (1.52m) track section and allow quick and safe curtain replacement. Unit includes durable hinge, locking mechanism and wand operation.
 - CE8620 - Safety Loading Unit, white baked acrylic enamel finish
 - CE8620-AN - Safety Loading Unit, Clear anodized finish
- Angle Bracket: Provide Angle bracket for level support on suspended ceiling.
 - CE8622 - Angle Bracket
- Operating Wand: Provide 45" (1.14m) long wand to lock and unlock safety loading unit from latch. One wand per 20 or fewer safety loading units.
 - CE8621 - Operating Wand
- Latch Suspension Support Set: Provide support set to be installed above latch assembly on suspended ceilings where angle bracket cannot be used.
 - CE8623 - Support Set
- Suspended Track Sets: Provide support set sized to support loads, designed to receive attachment from track support.
 - CE8500 - Hard Ceiling Support Brackets
 - CE8500-AN - Hard Ceiling Support Brackets, Anodized
- Sloped Ceiling Support Set Brackets: Provide brackets to mount to angle ceilings.
 - CE8400 - Sloped Ceiling Support Bracket
 - CE8400-AN - Sloped Ceiling Support Bracket, Anodized
- Post for Support Set: Provide 5/8" (15.86mm) clear anodized aluminum or white powder coat post for support set.
 - CE830008(-AN) - Post for Support Set
 - *Add -AN to part number for clear anodized aluminum finish
- Curtain Carriers: Provide carriers with non-binding nylon rollers to accurately fit track. Carriers to be fitted to curtain to prevent accidental curtain removal. 2.2 carriers per lineal foot of track length, plus one extra carrier.
 - CE9025 - Solid Hook Carrier
 - CE9038 - Ball and Chain Carrier
- Ligature Resistant Curtain Carriers: Provide non-binding canted wheel carrier of self-lubricating Acetal, fitted to curtain with ligature resistant hook for safety. 2.2 carriers per lineal foot of track length.
 - CE9026-LR - Ligature Resistant* Carrier.
 - *While these products are designed for behavioral health applications, they do not guarantee patient safety.
- Adjustable Drop Chain: Provide drop chain and adjust to accommodate curtain at desired height for air/steam circulation.
 - CE9039 - Adjustable Drop Chain
- Tie Backs: Provide curtain tie back to hold

curtain back.

- CE9251 - Curtain Tie Back - 48" (1.22m) long chain Fabric Tie Back - 3" x 18", 3/4" white velcro each end.
- Wall Brackets: Provide Wall Brackets to install track on wall. Bracket dimensions: 4.25" (108mm) deep x 1.75 (44mm) high x 1.25 (32mm) wide. Space brackets a maximum of 24" (610mm) on center.
 - CE5082 Wall Bracket, white.
 - CE5082-AN Wall Bracket, zinc plated.

2.04 I.V. BAG HOLDER SYSTEMS MATERIAL

- Ultra Cube I.V. Track: Heavy-duty extruded aluminum cubicle track with clear anodized aluminum or white baked acrylic enamel finish. Dimensions: height 1 1/8" (29mm), width 1 1/4" (32mm).

2.05 I.V. BAG HOLDER COMPONENTS

- I.V. Support Carriage: Provide carriage with ball bearing wheels, twist lock device for 8' (2.45m), 8'6" (2.59m), 9' (2.74m), 9'6" (2.9m), or 10' (3.05m) ceilings.
 - CE950208 - I.V. Carriage, 8' (2.45m) height
 - CE950286 - I.V. Carriage, 8'6" (2.59m) height
 - CE950209 - I.V. Carriage, 9' (2.74m) height
 - CE950296 - I.V. Carriage, 9'6" (2.9m) height
 - CE950210 - I.V. Carriage, 10' (3.05m) height
- I.V. Bag Holder: Provide holder of stainless steel with foldable arms for storage. Units are to be fully telescoping to any position, with a spring load action from release/lock ring.
 - CE9505 - 5 Unit Bag Holder
 - CE9509 - 9 Unit Bag Holder
- Stationary I.V. Pendant: Provide I.V. Pendant that attaches directly to hard ceilings.
 - CE950408 - Stationary I.V. Pendant, 8' (2.45m) height
 - CE950486 - Stationary I.V. Pendant, 8'6" (2.59m) height
 - CE950409 - Stationary I.V. Pendant, 9' (2.74m) height
 - CE950496 - Stationary I.V. Pendant, 9'6" (2.9m) height
 - CE950410 - Stationary I.V. Pendant, 10' (3.05m) height
- Ultra Cube I.V. End Cap: Provide end caps that cushion impact of I.V. Carriage.
 - CE9501 - I.V. End Cap, white
 - CE9501-AN - I.V. End Cap, gray

PART 3 - EXECUTION

3.01 EXAMINATION

- Examine areas and conditions in which the cubicle tracking systems will be installed.

- Complete all finishing operations, including painting, before beginning installation of cubicle tracking system materials.
- Verify that surfaces and above ceiling supports are ready to receive work.

3.02 PREPARATION

- General: Prior to installation, clean substrate to remove dust, debris and loose particles.

3.03 INSTALLATION

- General: Locate the cubicle track as indicated on the approved detail drawing for the appropriate substrate and in compliance with the Clickeze® installation instructions.

B. Installation of Cubicle Tracking Systems:

- Install cubicle track, secure, rigid, and true to ceiling line.
- Slide carriers onto the track.
- Install end cap or stop device.
- Secure or suspend track to ceiling system. Install with mechanical fasteners or gridclips.
- Install curtains on carriers ensuring smooth operation.

3.04 CLEANING

- At completion of the installation, remove any debris and clean surfaces in accordance with the Clickeze® clean-up and maintenance instructions.

Inprocorp.com • 800.222.5556 • 262.679.9010

World Headquarters S80 W18766 Apollo Drive, Muskego, WI 53150 USA

CLICKEZE®

PRIVACY SYSTEMS

A DIVISION OF INPRO®